



# **Weblink** Q1 Business Update

2023/06/07

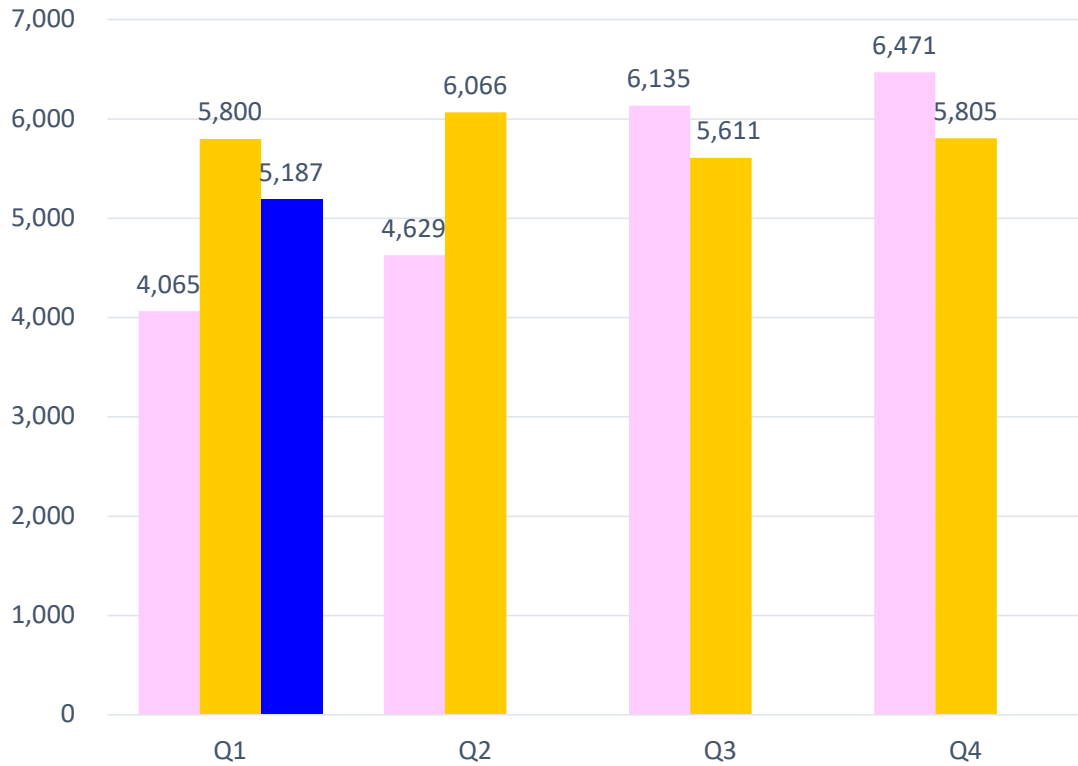
# Disclaimer

1. The information is provided for informational purposes only, and is not an offer to buy or sell or a solicitation of an offer to buy or sell any security issued by Weblink or other parties.
2. Weblink's statements that are not historical facts are forward-looking statements that indicate actions or results of actions that may occur in the future, based on current available information and underlying assumptions.
3. Weblink does not warranty their accuracy, reliability and completeness. There are a number of factors such as economic conditions, firms abilities, industry environment that could cause actual results and developments to differ materially from those expressed or implied by forward looking statements. Investors should not place undue reliance on them.

# Weblink Financial Result

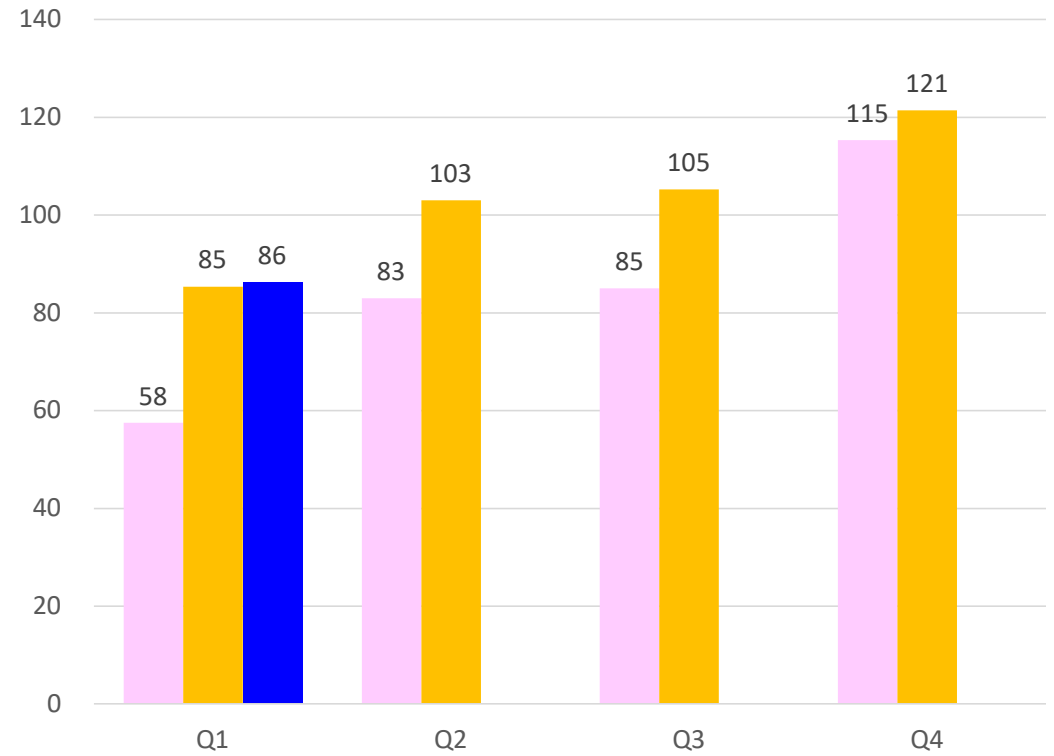
NT\$ M

## Revenue



Revenue 2021 Revenue 2022 Revenue 2023

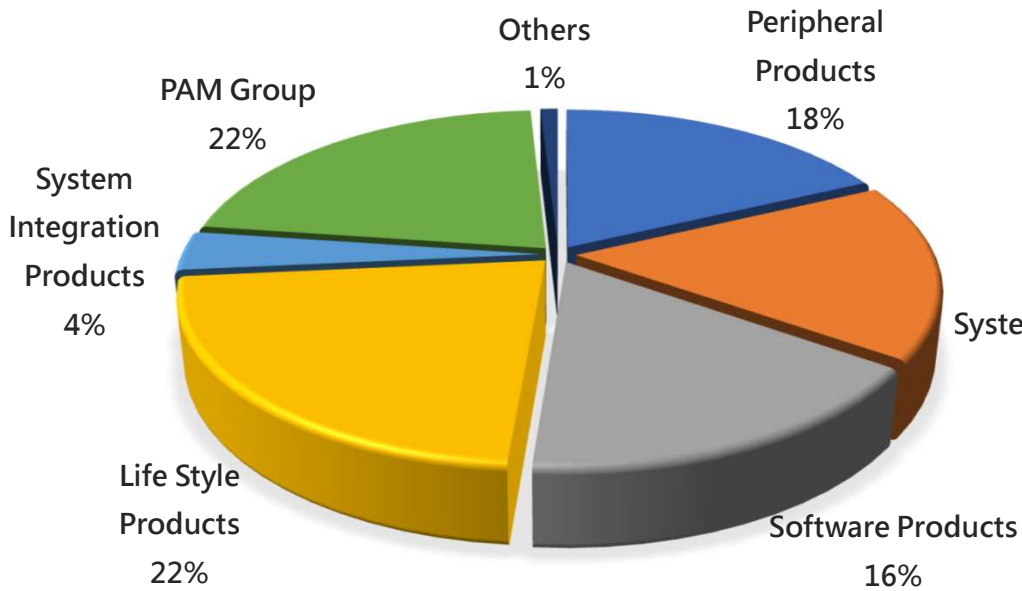
## Net Income



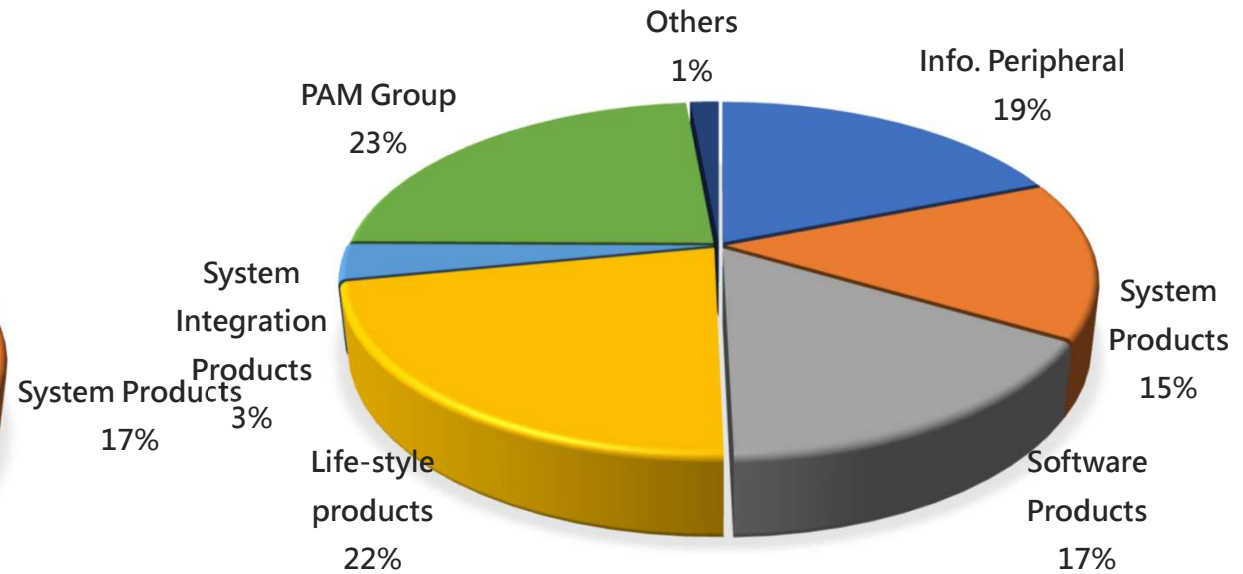
Net Income 2021 Net Income 2022 Net Income 2023

# Weblink Financial Result

## 2022 Proportions of Revenue



## 2023 Q1 Proportions of Revenue



# Weblink Financial Result

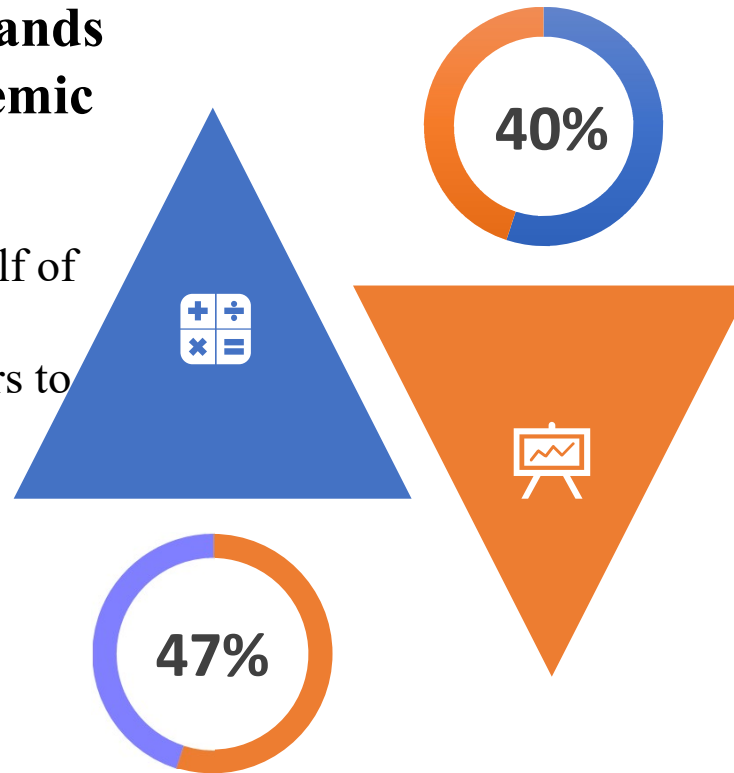
Unit:NT\$M	Y2023 Q1	YoY	Y2022 Q1	Y2022	YoY	Y2021
Revenue	5,187	-11%	5,800	23,282	9%	21,300
Gross profit	363	-13%	418	1,699	38%	1,235
Operating Income	108	-8%	118	523	65%	317
Net Income	86	1%	85	523	53%	341
EPS (NT\$)	1.06	1%	1.05	5.09	19%	4.28
GP%	7.0%		7.2%	7.3%		5.8%
PAT%	1.7%		1.5%	2.2%		1.6%

FY2022 EPS: 5.09; BOD proposed a dividend distribution of NT\$3.5 Per Share

# The growth in adversity

- ✓ **WFH economic demands declined due to epidemic slowed down**

The business of the first half of 2022 was not affected. But inflation affected consumers to reduce non-essential consumption.



- ✓ **The business of Nintendo Switch console was down 47% YoY.**

- ✓ **The demand for consumer 3C products dropped sharply**

Revenue of Notebook decreased 40% YoY.

Revenue of MSI graphic card decreased 36% YoY.

# The growth in adversity



**Information security and cloud software leasing services continued growing. YoY : 30%**



**Home appliances grew under the government's replacement subsidies YoY : 16%**



**Apple commercial products were still growing.**



**Kept good profit on commercial software products**



# 2023 Q2 Prospect

## Access digital platform to cooperate

- Distribute diversified products
- Expand Platform economics through horizontal integration



## Aggressively expand commercial market

- Negotiate & distribute the commercial products
- Continue expanding Apple's commercial market
- Start to export project business with Moxa

## Nintendo LaLaport opens in Taichung

Software- The Legend of Zelda Kingdom is hot sale now.



A bright sun is positioned in the upper left quadrant of the image, casting a starburst effect across the clear blue sky. The lower half of the image is filled with large, fluffy white cumulus clouds. The overall scene is bright and clear, suggesting a sunny day.

**Q & A**